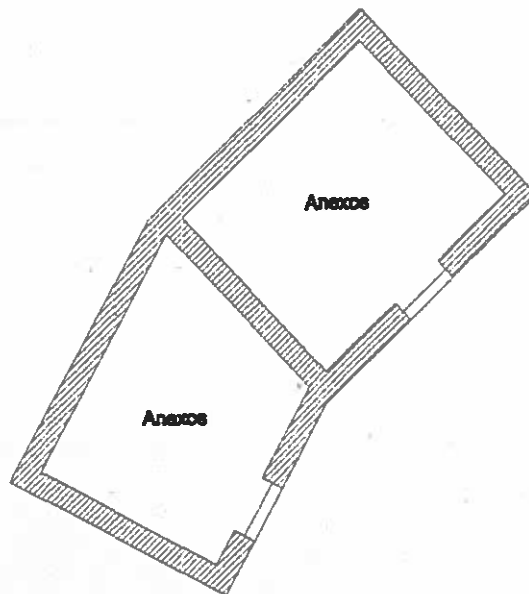


**Planta do Andar - 13.30m<sup>2</sup>**



**Planta do rés-do-chão - 24.20 m<sup>2</sup>**

**Area de Implantação - 24.20 m<sup>2</sup>**

**Area Bruta Dependente - 37.50 m<sup>2</sup>**

**Area Bruta de Construção - 37.50 m<sup>2</sup>**